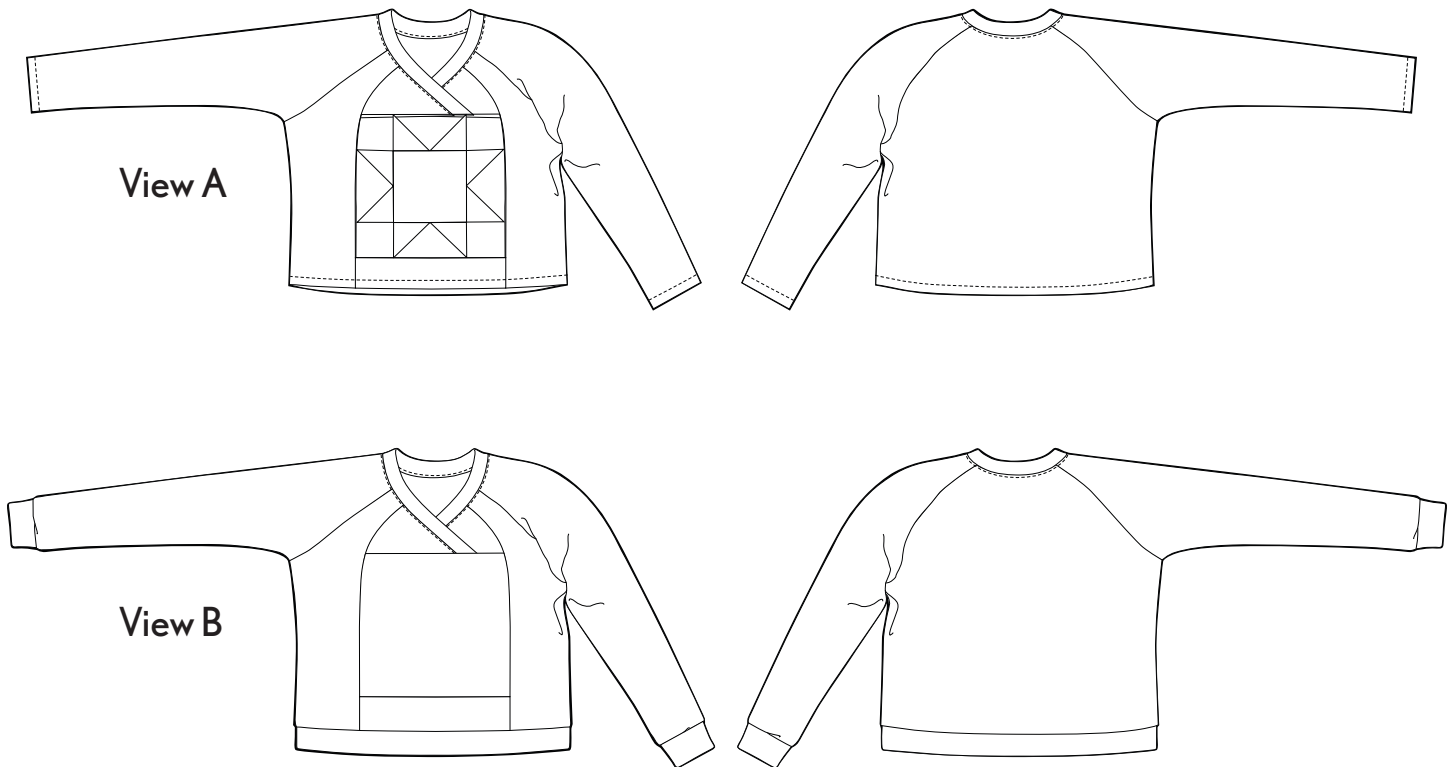


NEST SWEATSHIRT

You can color in your possible fabric combinations in these line drawings. [See more details and purchase the Nest Sweatshirt sewing pattern by clicking here.](#)

For **View A**, we recommend a stable knit fabric, such as cotton interlock or mid-weight ponte. Birch Organic Cotton Interlock is a wonderful choice, weighing 6.6 oz/yard with a 60% crossgrain stretch and 20% stretch along the grain. Less crosswise grain stretch is acceptable as well, and will be easier to handle when you're piecing the sawtooth star quilt block. **View A** has a pieced block on the front - this is an excellent opportunity to get creative with colour, scraps, and hand stitching!

For **View B**, you can use similar mid-weight knits such as cotton interlock, ponte, and double knits as well as French terry, and tighter sweater knits.



SEW
LIBERATED